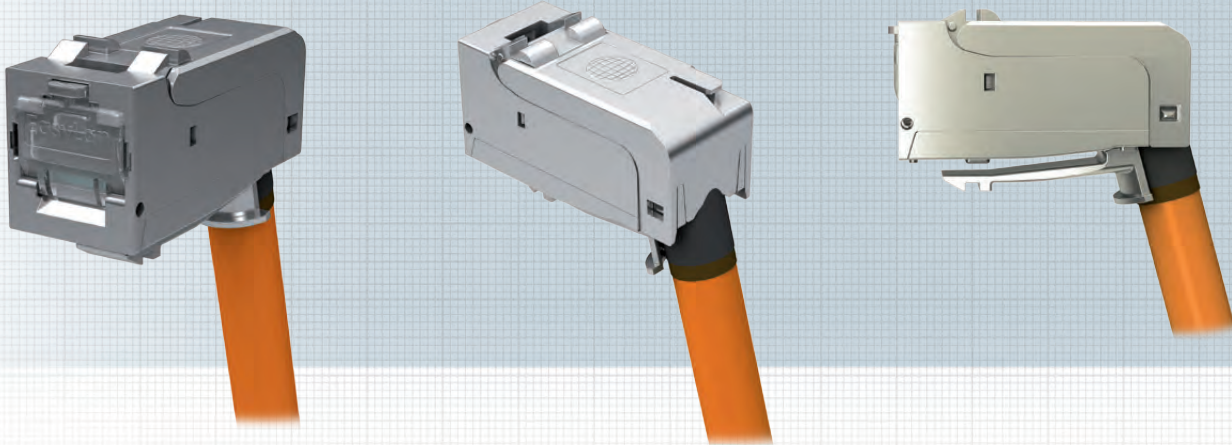


preLink® SL RJ45 Keystone Module, angled Cat. 6_A ISO/IEC, shielded

IN STOCK



With the angled preLink® SL 75° Keystone module, the user receives a top-quality RJ45 socket module with a maximum of flexibility. The preLink® SL 75° Keystone module makes it easy to just snap it onto the preLink® cable termination block. Thanks to an assembly process defined by way of preLink® assembly pliers, consistently high-quality assembly is ensured along with secure transmission performance. The special contact geometry in combination with a 50 μ" gold plating ensures PoE + according to IEEE 802.3at under all conditions. The housing material is made of nickel-plated die-cast zinc and thus meets the highest mechanical and environmental requirements. Use with the multi-design module holder permits combination with all switch product ranges. Various certifications (current list: www.easylan.de) from independent test laboratories round out the highest quality demands of the preLink® system. The preLink® Keystone modules are delivered in an environmentally friendly cardboard box.

Standards:

Connector Standard: IEC 60603-7-51

Mechanical Properties:

Mating cycles (RJ45 side)	≥ 750
Mating cycles (opposite side)	≥ 100
Housing material	nickel-plated die-cast zinc
Gold plating in contact area	50 μ"
Contacting	AWG 27-22 (depending on the terminal used)
Cable diameter	5-9.5 mm (depending on the terminal used)

Environmental requirements:

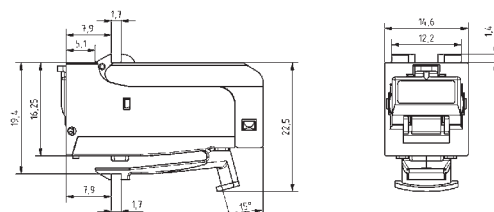
Connection class	IP 20
Temperature range	-40°C - +70°C

Electrical properties:

Current-carrying capacity at 50° C	1.25 A
PoE+ according to IEEE 802.3at	Suitable for Power over Ethernet+

Transmission characteristics for Cat.6_A ISO/IEC:

10 Gbit Class E _A	Supported
Cat. 6 _A	ISO/IEC 11801 AM1 and AMD2, Link length > 5 m, ISO/IEC 11801 AMD2



Description

Ordering Code

Description	Ordering Code	Ordering Code
preLink® SL RJ45 Keystone Shielded Cat.6 _A (ISO/IEC) with Cable Termination AWG 24-22 angled	PU: 24 CKWAS011	PU: 1 CKWAS011EP
preLink® SL RJ45 Keystone Shielded Cat.6 _A (ISO/IEC) with Cable Termination AWG 27-26 angled	CKWAS021	CKWAS021EP
preLink® SL RJ45 Keystone Shielded Cat.6 _A (ISO/IEC) without Cable Termination angled	CKWAO101	
preLink® SL RJ45 Keystone Shielded Cat.6A (EIA/TIA) with Cable Termination AWG 24-22 angled	CKWES011	CKWES011EP
preLink® SL RJ45 Keystone Shielded Cat.6A (EIA/TIA) with Cable Termination AWG 27-26 angled	CKWES021	CKWES021EP
preLink® SL RJ45 Keystone Shielded Cat.6A (EIA/TIA) without Cable Termination angled	CKWEO101	