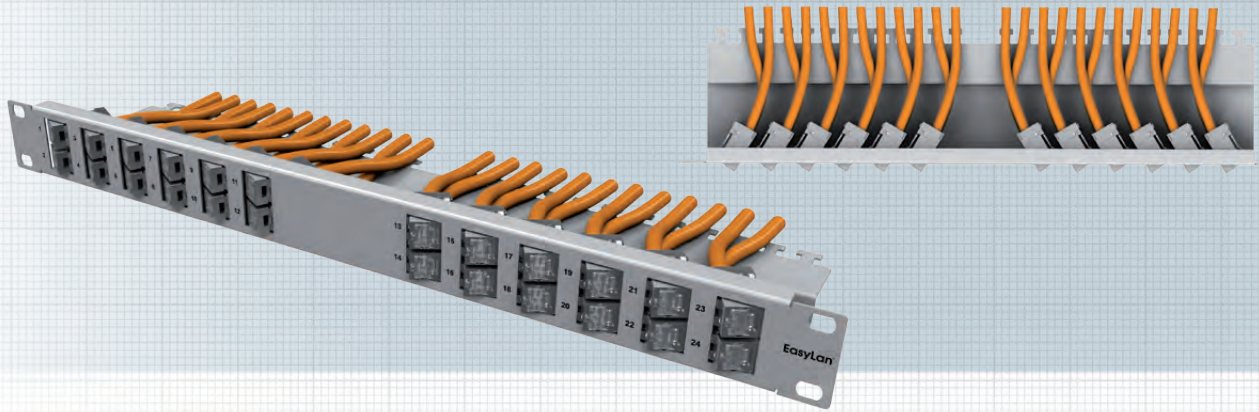


Angled panel 30° 19" 1U for 24 Keystone modules

Variant 1: Keystone Angle: 12 left, 12 right

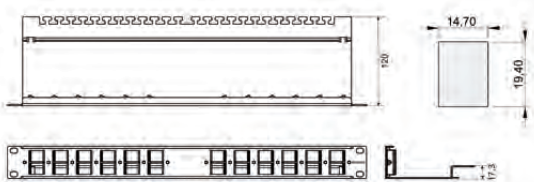


With the preLink®/fixLink® angled panel, the user has the option of clicking 24 keystone modules into the panel at an angle of 30°, and as a result the connected patch cables automatically run to the cabinet side and need only be attached laterally beside the patch level. This means the user can eliminate additional routing panels for cable routing. During operation, the angled panels with the flat front side and the side-facing patch cables also require less space than conventional patch panels with vertically installed ports.

Mounting material and Keystone modules are not included!

Standards:	IEC 60 603-7-1
Properties:	
Installation dimension	19" 1U depth 120 mm
Front side	standard cut-out 24 modules
Back side	cable clamps
Material housing	steel plate, varnished RAL7035 (gray)
Cable fastening	via cable ties
Materials	per RoHS 2002/95/EG
Environmental requirements	Connection class IP20
Temperature range	-40°C to +70° C
Application	Installation in distribution rack
Packaging unit	1 piece per box

Cut-out dimensions
Keystone cut-out



Description

preLink® / fixLink® Angled Panel 1U 19" Variant 1 / Keystone Angle: 12 left, 12 right

Ordering Code

CKVPL0W01E