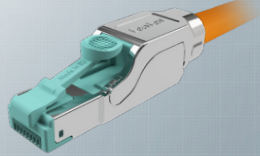
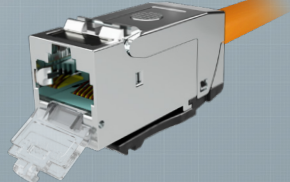


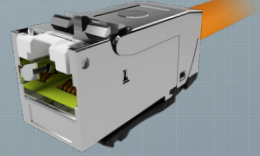
## Anschlussmodule



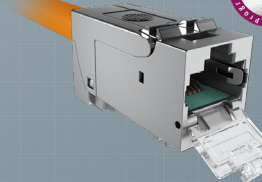
fixLink® RJ45 Plug Kat.6<sub>A</sub> ISO/IEC  
CKFFK001 (AWG 26-22)



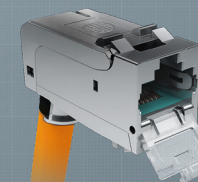
fixLink® Pro Keystone Kat.6<sub>A</sub> ISO/IEC  
CKFAK002 (AWG 24-22)  
CKFAKFL2 (AWG 27-26)



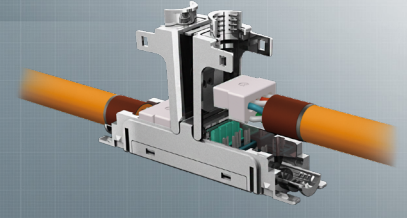
fixLink® Pro + Keystone Kat.8.1 ISO/IEC  
CKFAK002P+ (AWG 26-22)



fixLink® SL Keystone Kat.6<sub>A</sub> ISO/IEC  
CKFAK001 (AWG 24-22)  
CKFAKFL1 (AWG 27-26)



fixLink® SL Keystone Kat.6<sub>A</sub> ISO/IEC gewinkelt  
CKWAK007 (AWG 24-22)  
CKWAKFL7 (AWG 27-26)



fixLink® Extender Kat.6<sub>A</sub> ISO/IEC  
CKEF0000 (AWG 24-22)  
CKEFLFL (AWG 27-26)

### Modulträger SL



1-fach  
CKVDUSL1R

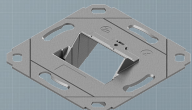


2-fach  
CKVDUSL2R



3-fach  
CKVDUSL3R

### Designfähige Modulträger



1-/2-fach ohne Zentralplatte  
CKVD1DS

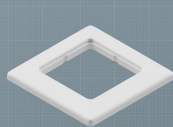


1-fach mit Zentralplatte  
CKVD1D2

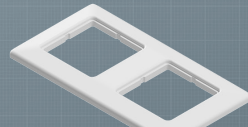


2-fach mit Zentralplatte  
CKVD1D1

### Rahmen für Modulträger



1-fach  
ADZ00102

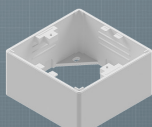


2-fach  
ADZ00103

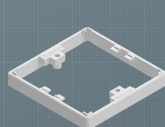
### Aufputz Modulträger



2-fach gerade  
CKVDU292



Aufputzbecher  
CKVDAP90



Tiefenerweiterung 10 mm  
CKVDDR90



Modulaufnahme IP44  
CKVDAP92

### Bodentankträger



OBO Trägerplatte GB2  
ABG00011



OBO Trägerplatte GB3  
ABG00012



Adapter  
für Electraplan  
ABG00017



Einbauplatte 3x Keystone  
ABG00016



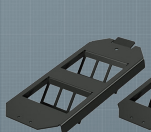
Einbauplatte 4x Keystone  
ABG00014



Blindplatte  
ABG00013

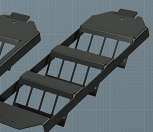


Zugentlastung  
ABG00018

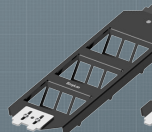


GB2 2x3  
ABGECO023

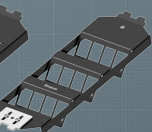
Bodentankträger Basic  
GB3 3x3  
ABGECO033



GB3 3x4  
ABGECO034

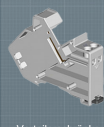


PUK Bodentankträger GB3 3x3  
ABGPUK033



PUK Bodentankträger GB3 3x4  
ABGPUK034

### Hutschienenmodule



Verteilerschranke  
CKVHM0D

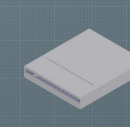


Schalterschranke  
CKVHEC0M0D

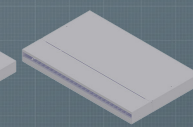


Seitenabdeckung  
CKVHEC0STL

### Modulare Consolidation Point Gehäuse



10" modular für 12x Keystone  
CPPF01KS1E



19" modular für 24x Keystone  
CPPF09KS1E

### Consolidation Point Gehäuse



4-fach  
CKVPL0041E



6-fach  
CKVPL0061E

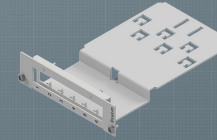


8-fach  
CKVPL0081E

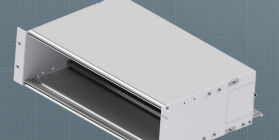


12-fach  
CKVPL0121E

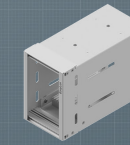
### Baugruppenträger (BGT)



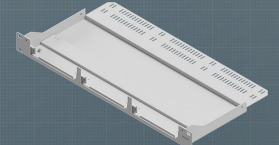
Einschubmodul für BGT  
CVE000001E



3 HE BGT  
AVM100021E

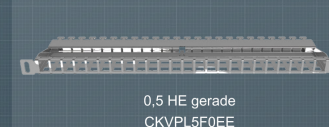


Side BGT  
AVMS10001E



1 HE BGT  
AVM113001E

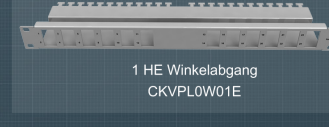
### Panel



0,5 HE gerade  
CKVPL5F0EE

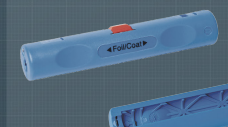


1 HE gerade  
CKVPL0101E

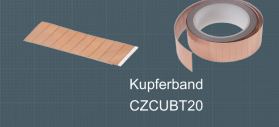


1 HE Winkelabgang  
CKVPL0W01E

### Zubehör



Abmantelwerkzeug  
CZABIBL1



Kupferband  
CZCUBT20



Staubschutzkappen